

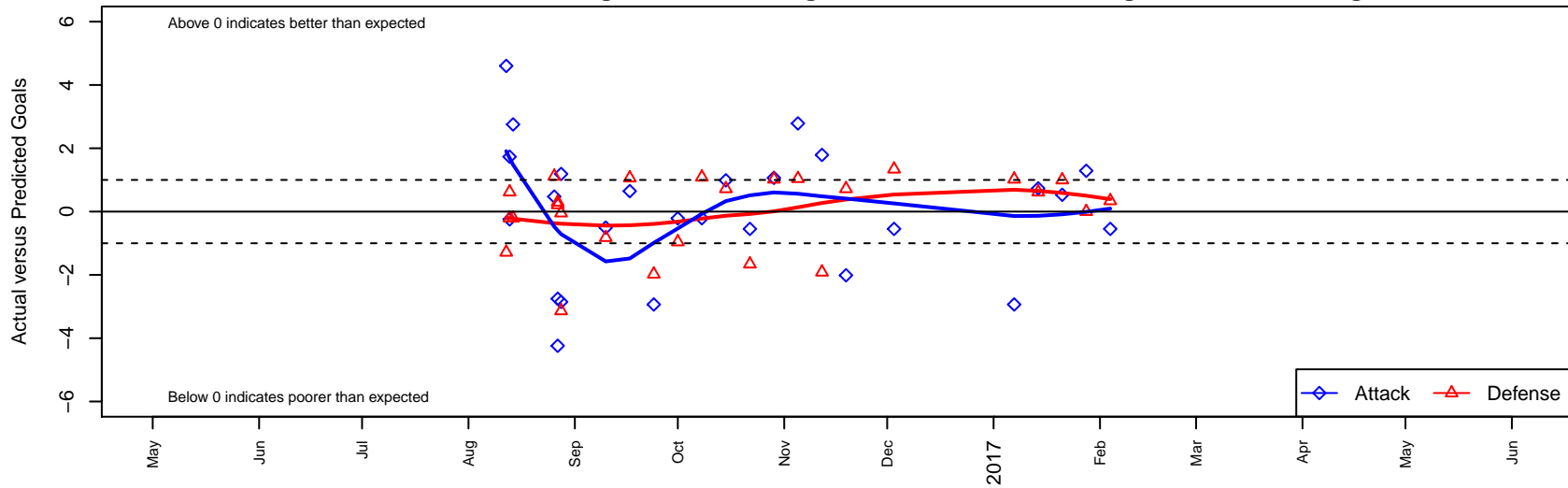
# NSC Sharks Green B05

Northshore SC  
 Woodinville, WA  
 B05 total strength=805  
 attack=0.98 defense=1.05  
 fall league = NPSL Div 1 (05) U12

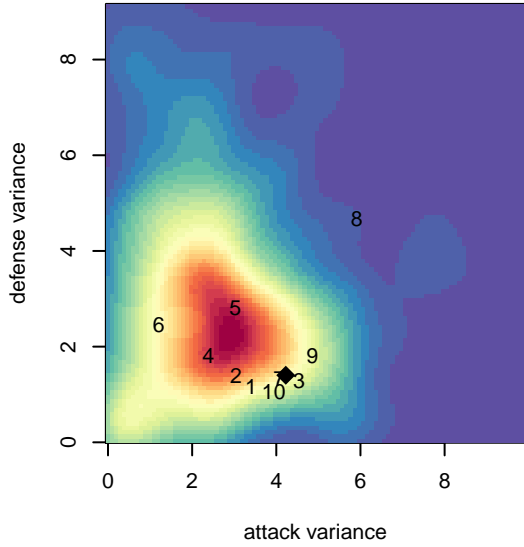
alt names used:  
 NSC B05 Green – Sharks  
 NSC B05 Green – Sharks  
 NSC B05 Green – Sharks  
 NSC Sharks B05 Green

Venues played:  
 2016 Blast Off B2005 A  
 2016 Summer Slam Gold/Silver U12  
 2016 NPSL Division 1 (05) U12  
 2016 Founders Cup B05 Div A

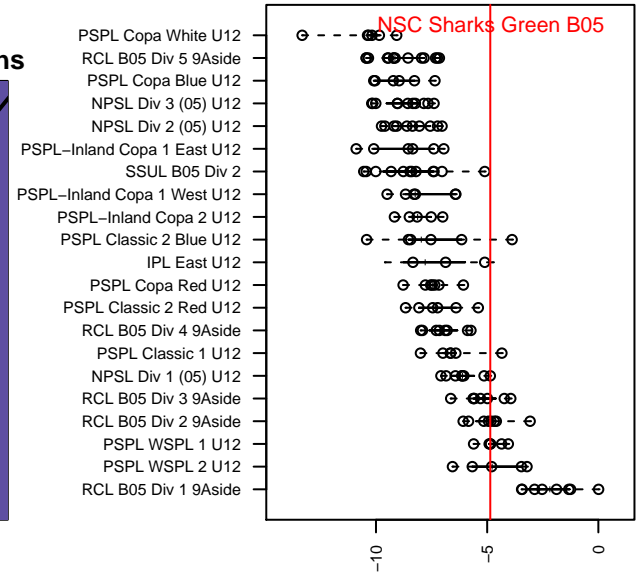
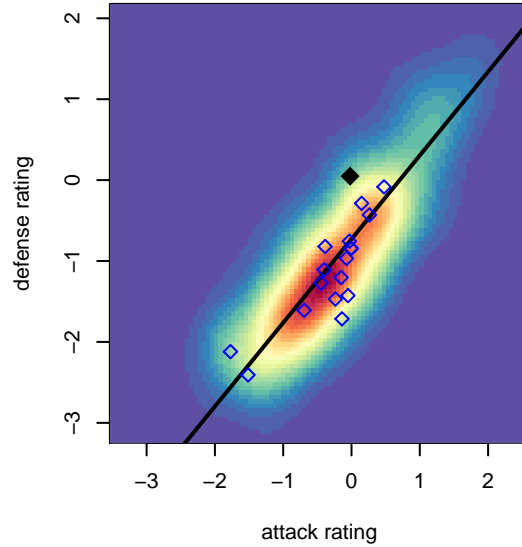
**NSC Sharks Green B05**  
 Dots are actual minus expected GF (blue circles) and GA (red triangles).  
 Blue line is smoothed change in attack strength. Red is smoothed change in defense strength.



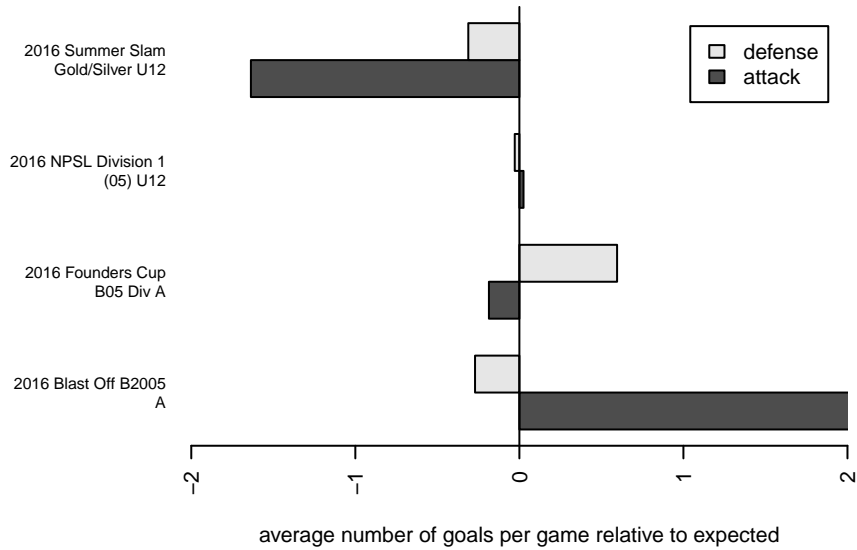
**attack and defense variance (black dot)  
relative to other teams  
and top 10 in region**



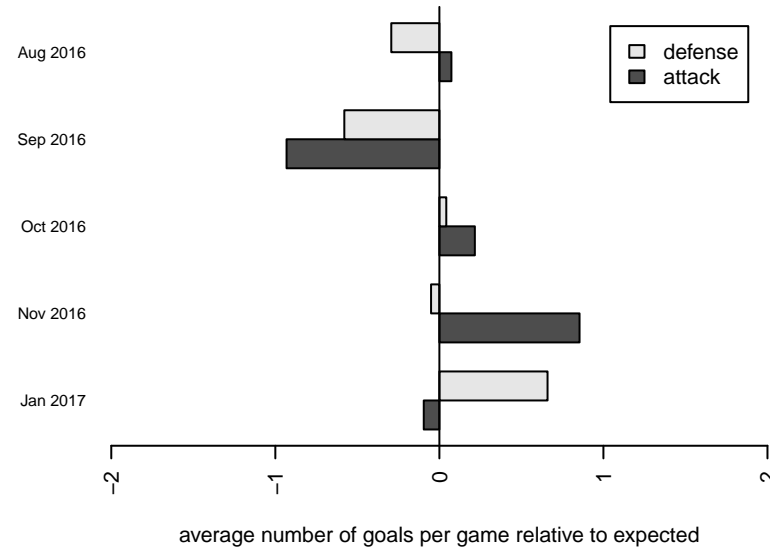
**attack and defense rating  
relative to others at age  
and all opponents in last 13 months**



**Performance relative to 13 month average**



**Performance relative to 13 month average**



<b>date</b>	<b>home</b>		<b>away</b>		<b>venue</b>	<b>pred.home</b>	<b>pred.away</b>
2017-02-04	Crossfire Select Pratt B05	1	NSC Sharks Green B05	1	2016 Founders Cup B05 Div A	1.34	1.55
2017-01-28	NSC Sharks Green B05	6	Newport FC A B05	1	2016 Founders Cup B05 Div A	4.71	1.00
2017-01-21	NSC Sharks Green B05	6	South Whidbey Tsunami B05	0	2016 Founders Cup B05 Div A	5.47	1.00
2017-01-14	Bellevue United Select B05	0	NSC Sharks Green B05	6	2016 Founders Cup B05 Div A	0.62	5.27
2017-01-07	NSC Sharks Green B05	0	Seattle United W Blue B05	0	2016 Founders Cup B05 Div A	2.93	1.02
2016-12-03	NSC Sharks Green B05	1	Crossfire Select Pratt B05	0	2016 NPSL Division 1 (05) U12	1.55	1.34
2016-11-19	Seattle United S Blue B05	0	NSC Sharks Green B05	1	2016 NPSL Division 1 (05) U12	0.72	3.01
2016-11-12	Crossfire Select Zlateff B05	3	NSC Sharks Green B05	4	2016 NPSL Division 1 (05) U12	1.09	2.21
2016-11-05	NSC Sharks Green B05	5	Seattle United Shoreline Blue B05	0	2016 NPSL Division 1 (05) U12	2.21	1.04
2016-10-29	Seattle United W Blue B05	0	NSC Sharks Green B05	4	2016 NPSL Division 1 (05) U12	1.02	2.93
2016-10-22	Crossfire Select Pratt B05	3	NSC Sharks Green B05	1	2016 NPSL Division 1 (05) U12	1.34	1.55
2016-10-15	NSC Sharks Green B05	4	Seattle United S Blue B05	0	2016 NPSL Division 1 (05) U12	3.01	0.72
2016-10-08	NSC Sharks Green B05	2	Crossfire Select Zlateff B05	0	2016 NPSL Division 1 (05) U12	2.21	1.09
2016-10-01	Seattle United Shoreline Blue B05	2	NSC Sharks Green B05	2	2016 NPSL Division 1 (05) U12	1.04	2.21
2016-09-24	NSC Sharks Green B05	0	Seattle United W Blue B05	3	2016 NPSL Division 1 (05) U12	2.93	1.02
2016-09-17	NSC Sharks Green B05	3	BIFC Blue B05	0	2016 NPSL Division 1 (05) U12	2.35	1.06
2016-09-10	Nortac Colibri B05	2	NSC Sharks Green B05	2	2016 NPSL Division 1 (05) U12	1.18	2.51
2016-08-28	NSC Sharks Green B05	5	Dalles FC Whitecaps B05	1	2016 Summer Slam Gold/Silver U12	3.81	0.95
2016-08-28	NSC Sharks Green B05	0	HSC Boca Jrs B05	4	2016 Summer Slam Gold/Silver U12	2.85	0.86
2016-08-27	Corvallis Riptide B05	0	NSC Sharks Green B05	6	2016 Summer Slam Gold/Silver U12	0.21	8.75
2016-08-27	NSC Sharks Green B05	6	Washington Timbers Green 1 B05	0	2016 Summer Slam Gold/Silver U12	10.24	0.30
2016-08-26	NSC Sharks Green B05	2	FC Salmon Creek White B05	0	2016 Summer Slam Gold/Silver U12	1.53	1.11
2016-08-14	Kent City White B05	2	NSC Sharks Green B05	4	2016 Blast Off B2005 A	1.79	1.25
2016-08-13	NSC Sharks Green B05	7	Bellevue United Select B05	0	2016 Blast Off B2005 A	5.27	0.62
2016-08-13	NSC Sharks Green B05	1	Kent City White B05	2	2016 Blast Off B2005 A	1.25	1.79
2016-08-12	FWFC Blue B05	2	NSC Sharks Green B05	7	2016 Blast Off B2005 A	0.71	2.40